

Miles Schneider
Data Mining with Information Theory
Dr. Joe Fusion
Submitted March 15th 2018

Abstract

The current study utilized software package Occam to conduct Reconstructability Analysis (RA) on a set of survey data initially collected to characterize the psychology of members of the “alternative right”, or “alt-right”. Results indicate that most of the variables included in the dataset do not interact with one another in predicting whether or not a participant in the study identified as alt-right. There is some evidence that three distinct pairings of racial groups interact to explain more information than they do separately. We find also find that trust in media source The Huffington Post is inversely correlated with identifying as alt-right. Our analyses do not support previous findings of two distinct subgroups comprising the alt-right.

Introduction

The “alternative right”, or “alt-right”, has emerged recently as a controversial and potent group in American politics, notably playing a significant role in characterizing the climate and outcome of the 2016 presidential election. The political establishment and media outlets have both had difficulty understanding the movement, in part due to their swift rise to power, but also because of the widely diverse philosophies and ideologies to which its constituents purportedly subscribe. The alt-right has been described as containing liberals, leftists, and conservatives, and characterized variously as reactionary, mischievous, victimized, and champions of free speech (Cook, 2016). The movement has a strong web presence, with much of its recruitment and organization occurring online via social media platforms among a youthful following. Troublingly, the alt-right has increasingly been associated with White supremacy and violence, particularly in the form of shootings at rallies and in schools (Hankes and Amend, 2018).

In an effort to elucidate the movement’s composition and aims, one recent study collected data from self-identified supporters of the alt-right in an online survey (Forscher and Kteily, 2017). Survey questions focused on respondents’ concepts of White supremacy, establishmentism, and populism, their views on a variety of ethnic groups and opposing political movements, as well as a variety of other psychological, demographic, and personal details. The authors argue that their results describe two large subgroups which together constitute the alt-right movement. One subgroup is populist in nature, characterized by a distrust of mainstream media and a general concern with governmental corruption. The other is extremist and aggressive, with strong prejudice and dehumanization with regard to certain religious and ethnic groups.

The goal of the present paper is to build on the above survey study by analyzing its data using Reconstructability Analysis (RA), a method of modeling relationships, mappings, and statistical distributions among multivariate nominal datasets (Zwick, 2004). It is hoped that the application of RA might either provide further evidence of the subgroupings proffered by the

authors of the survey study described above, and/or reveal alternative subgroups or structures not previously described.

Data and Method

Materials

The data in the current study was collected by Roscher and Kteily (2017), who gathered it via online survey through Amazon's information gathering service, mTurk (<https://www.mturk.com/>). Participants who identified as alt-right were paid \$3 for their time, while participants in a control group were paid \$2. The survey was comprised of 212 questions, although after some were dropped and binning variables were added (see below), the dataset used in the current study contained a total of 247 variables. See Appendix A for full list of variables with descriptions and cardinality as they were used in the current study. See Appendix C for the code book used in the original study.

The current analysis was done using Occam, a software package designed to carry out RA (<http://dmm.sysc.pdx.edu/>). Occam is described in depth elsewhere (Zwick, 2004; Zwick et al 2016), and can carry out many more kinds of searches than are represented in the current study. Here, Occam was used primarily to search for models with loops (multiple predicting components), without loops (single predicting component), and disjoint models (with loops, but variables may not appear more than once). Three primary rubrics provided by Occam were used for comparing models: total information explained ("inf"), difference in Akaike Information Criterion, and difference in Bayesian Information Criterion.

Occam was also used to produce fit tables for models of interest discovered in these searches. Microsoft Excel was used to augment or edit outputs; in particular, it was used to calculate odds and odds ratios based on fit tables.

Binning

All non-binary variables were binned into low, medium, and high groups, sorted by equal division of the various scales in use (e.g., questions asking ratings on a scale of 1-100 were binned into three groups of ratings 1-33, 34-67, and 68-100). When mathematically equal division was not desirable, the middle of the range was favored as the larger bucket, such that symmetry was maintained across the scale (e.g., questions with Likert scales of 1-7 were binned to three groups of ratings 1-2, 3-5, and 6-7). A final binning group for all variables encoded participants who failed to answer the question. Methodologically, bins were achieved variously by use of the Occam "exclude" string in the input files, or by the creation of a new, binned version of the necessary variable in Excel by hand.

Excluded variables

An overwhelming proportion of participants who failed to respond to the variable Altrtid also failed to respond to the the bulk of the questions (i.e. these respondents only answered the first couple of questions in the survey and then quit). As Altrtid was used in the current study as the dependent variable in most of the analyses, these respondents were excluded from all

Occam runs, reducing the study size from $n=978$ to $n=524$ records. This exclusion was achieved methodologically through use of the Occam “exclude” string.

Several items on the survey allowed respondents to free-write answers to a prompts. These items were excluded from the current study, as there was no ready way to quantify the responses.

Three sets of questions asked respondents to name up to five close friends, then assign ratings for how close they felt, how similar their moral compass was, and how much the participant felt each friend identified with the alt-right. All these responses were excluded; instead, a new variable was created for the three question types. These variables encoded the average rating across all the friends named by the participant to come up with a single rating respectively for closeness, morality, and alt-right identity. These averages were then binned into low, medium, high, and did-not-respond groups, as described above.

A variable encoding participants’ country of origin was excluded as the vast majority of respondents identified as being from the United States, with other countries having just a single representative. Any effect observed from those respondents would have been statistically unsound.

Finally, three administrative variables were excluded. This includes a duplicate Altrtid variable, as its function in the original survey was to weed out participants who may have provided unreliable data, and respondents who failed this test had already been dropped from the dataset.

Results

1. Neutral searches

Neutral searches were conducted on the data with no specified dependent variable, in order to ascertain what clustering the variables might exhibit. However, these searches failed to yield concrete results. Searching dozens of levels up from the bottom of the model lattice failed to select an apex model with any variable clustering at all--rather, the most complex model was always chosen in each search. Even searching with a width of just one variable--that is, having Occam pick just one model at each level to minimize processing time and maximize number of levels searched--yielded inconclusive results. Initially this led to the impression that the best model was the data distribution itself, with no variable clustering; however, top-down searches likewise failed to settle on an ideal model despite many levels of searching. Presumably a “best model” does exist somewhere between these two extremes, but given the constraints of this project, it was not found. It is also likely that even if it were found, its complexity would render it extremely difficult to analyze for the purposes of the present paper.

2. Directed searches

A loopless directed search was carried out on the entire dataset using variable Altrtid (whether or not respondents identified as belonging to the alt-right) as the dependent variable (DV). On this run, Occam picked IV:AltrtidMedhuff as the best model, given its simplicity in DF relative to its information content ($\text{inf}=0.16834446$, $\text{dAIC}=24.7335$, $\text{dBIC}=11.9490$). The Medhuff variable, which measured respondents’ self-reported trust in media outlet *The Huffington Post*,

utilized a five-point Likert scale. As mentioned above, the scale was further binned into four groups: low (Likert ratings of 0-1), medium (2-3), and high (4-5) trust in The Huffington Post, plus a final group of participants who did not answer the question.

A state-based analysis of the IV:AltrtidMedhuff model revealed that the high-trust group was disproportionately responsible for the model's success, with $\text{inf}=0.9547670$. However, this only held true in tests where the fourth binning group, that of non-respondents to the Medhuff variable, was excluded. The inclusion of the non-respondent group led to it being picked as the best state-based model by all three tests ($\text{inf}=0.85126297$, $\text{dBIC}=154.08$, and $\text{dAIC}=158.7893$); however, this is likely a distortion due to most non-respondents to the Medhuff variable also being non-respondents to the DV and other variables. Therefore, we proceeded using the former model, with the non-respondents excluded.

Next, the IV:AltrtidMedhuff model was run through a fit search, and an odds ratio was computed comparing the ratio of alt-right identifiers (Altrtid=1) within each state of the Medhuff variable to non-identifiers (Altrtid=0), as compared to the distribution across the whole data sample (Table 1).

Table 1: fit table for IV:AltrtidMedhuff with odds and odds ratios computed

<u>Medhuff</u>	<u>freq</u>	<u>% Altrtid=0</u>	<u>% Altrtid=1</u>	<u>Odds</u>	<u>Odds Ratio</u>
1	333	1.502	98.498	65.57789614	2.579767571
2	115	2.609	97.391	37.32886163	1.468479356
3	54	20.37	79.63	3.909180167	0.153783162
<i>total</i>	502	3.785	96.215	25.42007926	1

The odds ratio analysis revealed that the two lower-trust groups for the Medhuff variable were between approximately 1.5 and 2.5 times more likely to identify as alt-right than the average study participant. The high-trust group, however, was just 0.15 times as likely to identify as alt-right as the survey average. Overall, these results show a strong inverse relationship between trust in the Huffington post and identifying as alt-right.

After discovering the disproportionate influence of the high-trust group on the efficaciousness of model IV:AltrtidMedhuff, another state-based search was run, this time with the addition of the variable Racew, a yes/no check box for whether respondents identified racially as white. Of the three models selected in the initial loopless search that were progeny of model IV:AltrtidMedhuff, IV:AltrtidRacewMedhuff had highest information, dBIC, and dAIC scores ($\text{inf}=0.20655535$, $\text{dAIC}=23.7093$, $\text{dBIC}=-6.1211$). Given the increase in complexity of this model relative to model IV:AltrtidMedhuff ($\text{df}=7$ vs $\text{df}=3$), IV:AltrtidRacewMedhuff was not picked by Occam as a top predictive model. However, the intention with this state-based search was to see if composing the Racew variable with the Medhuff3 state of the IV:AltrtidMedhuff model would yield a better model than IV:AltrtidMedhuff, given its reduced cost in complexity relative to the full IV:AltrtidRacewMedhuff model.

Contrary to this hypothesis, however, the state-based search showed that IV:Altrtid:AltrtidMedhuff remained the best model in terms of information content, while model IV:Altrtid:AltrtidMedhuff3 scored best in dBIC and dAIC. Model IV:Altrtid:AltrtidRacew1Medhuff3

explained significantly less information and scored lower in the dBIC and dAIC measures than the former models (Table 2).

Table 2: output for SB search of variables Medhuff and Racew

Model	inf	dAIC	dBIC
IV:Altrtid:AltrtidMedhuff	0.79304365	23.0120	14.5708
IV:Altrtid:AltrtidMedhuff3	0.75717191	19.5696	23.7902
IV:Altrtid:AltrtidRacew1Medhuff3	0.43607494	12.8532	8.6326
IV:Altrtid:AltrtidMedhuff1	0.3903038	11.2942	7.0736
IV:Altrtid:AltrtidRacew	0.15624712	3.322	-0.8986

Given the amount of statistical dominance Medhuff seemed to exhibit over the results, another directed run was undertaken using all variables except Medhuff. The idea here was to see what other variables might be good predictors of Altrtid in the absence of the obfuscation introduced by Medhuff. A search of loopless models picked a model with just one predictor, IV:AltrtidSnidbin, but a search including models with loops found two slightly more complex models of interest. The first was the two-variable model IV:AltrtidSnidbin:AltrtidMedcbs which was scored best by dBIC (12.807). Snidbin is a variable measuring how much participants judged their friends to identify with the alt-right. Medcbs measures trust in media outlet CBS.

Two levels higher, IV:AltrtidSnidbin:AltrtidSdo3:AltrtidBlatwht9:AltrtidMedcbs was picked on the basis of information (0.44159402) and dAIC (56.6187). The additional variables in the latter model are binned low, medium, and high Likert scale assignments to the prompts, “Groups at the bottom are just as deserving as groups at the top” (Sdo3, an item from the Social Dominance Orientation scale; higher rating indicates more agreement), and “rate how well the following term [genetically inferior] describe[s] White Americans” (Blatwht9, an item from the “blatent racism against Whites” scale). The relationship between these four variables was linear in that the sum of the information each captured individually in single-variable models was roughly equal to the information captured in the four-part model (Table 3 and Figure 2).

*Table 3: information content for model
IV:AltrtidSnidbin:AltrtidSdo3:AltrtidBlatwht9:AltrtidMedcbs and its sub-models*

MODEL	Inf
IV:AltrtidSnidbin	0.15584069
IV:AltrtidSdo3	0.12156213
IV:AltrtidMedcbs	0.09453928
IV:AltrtidBlatwht9	0.08594543
	<i>Above total = 0.45788753</i>
IV:AltrtidSnidbin:AltrtidSdo3:AltrtidBlatwht9:AltrtidMedcbs	0.44159402

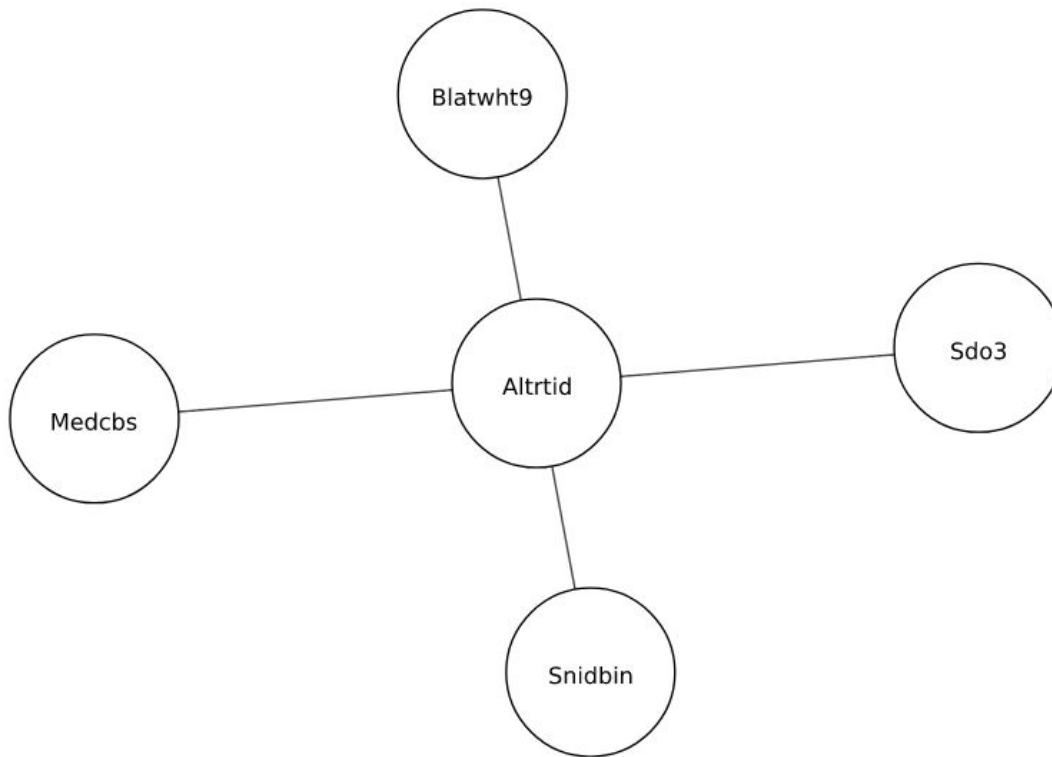


Figure 1: hypergraph showing linearity and independence between predictive variables in model IV:AltrtidSnidbin:AltrtidSdo3:AltrtidBlatwht9:AltrtidMedcbs

3. Directed disjointed search

Finally, in the hope of uncovering more complex models showing multiple interacting variables, a disjointed search was performed. Disjoint searches are coarse runs in which Occam will only pick models where variables appear only once. This run again picked model IV:AltrtidSnidbin:AltrtidMedhuff by dBIC, and found a model similar to the last one described above, IV:AltrtidSnidbin:AltrtidBlatwht9:AltrtidMedhuff, to be best by information (inf=0.3995679). However, using the dAIC criterion, the disjointed search picked a high-level model:

IV:AltrtidRacewRacee:AltrtidRacebRaceh:AltrtidRacesRaceo:AltrtidSnidbin:Altrtid Sdo3:AltrtidRwa4:AltrtidMotims1:AltrtidBehdox:AltrtidBlatwht9:AltrtidAscrusbi:AltrtidAscwhtbi:AltrtidTrumpall:AltrtidMedcbs:AltrtidWlm3:AltrtidWlm5

Structurally, this model is composed of four distinct sections: three pairs of interacting demographic variables representing all six questions regarding participants' race, plus a pool of diverse, non-interacting independent variables representing many different sections of the questionnaire (Figure 2).

The structure of this model indicates that when considered together, the variable pairs corresponding to racial groups White (racew) and East Asian (racee), Black (raceb) and Hispanic (raceh), and South Asian (races) and “Other” (raceo), provide more information about the data than when they are considered separately. Given the diversity of the non-interacting variables contained in the model (ranging from questions about the Black Lives Matter movement and online harassment, to measures of blatant dehumanization of various racial groups), this is a decent indicator that race could have an interesting relationship with the breadth of psychological factors queried in the survey. Further research going beyond the exploratory goals of the current paper will be required to tease out the exact causal relationships between these demographic variables and the rest of the dataset.

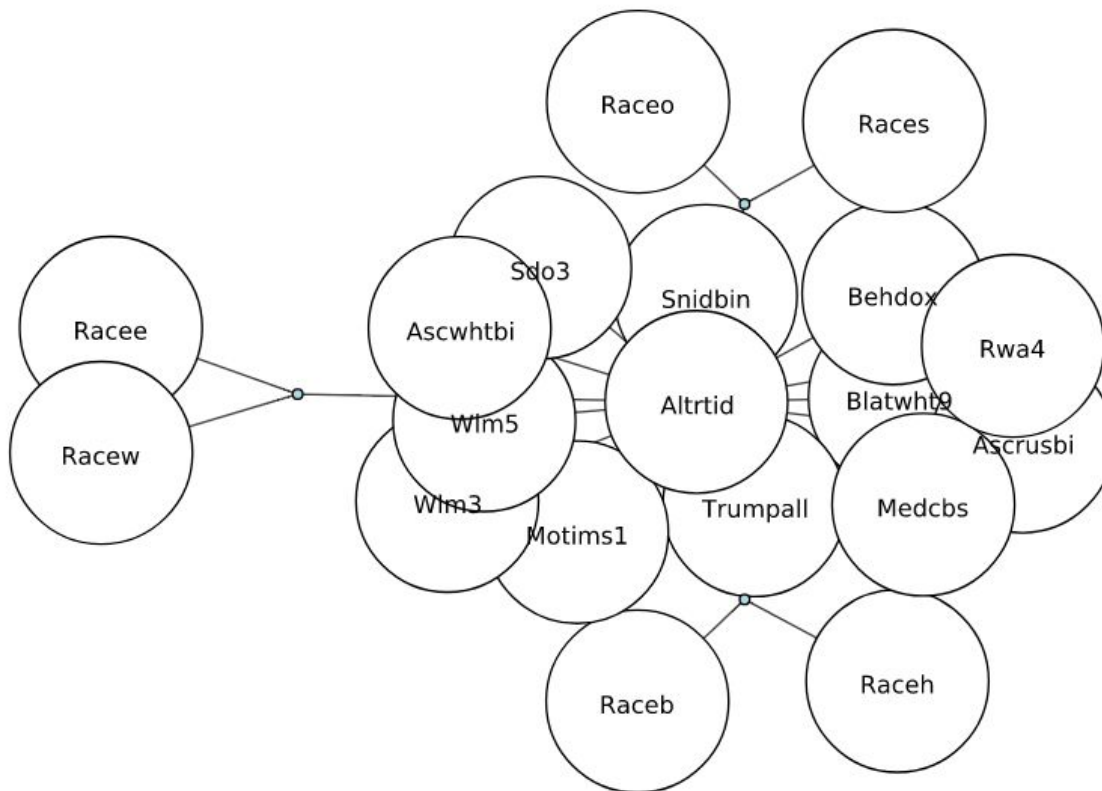


Figure 2: Hypergraph representing the four-part structure of a model picked by disjoint search using the dAIC critireon:

IV:AltrtidRacewRacee:AltrtidRacebRaceh:AltrtidRacesRaceo:AltrtidSnidbin:AltrtidSdo3:Altrtid Rwa4:AltrtidMotims1:AltrtidBehdox:AltrtidBlatwht9:AltrtidAscrusbi:AltrtidAscwhtbi:AltrtidTrump all:AltrtidMedcbs:AltrtidWlm3:AltrtidWlm5

To explore the nature of the interactions *within* each pair of race variables with regard to the DV, a fit search was performed. Occam was unable to output fit tables for the full model (it is assumed this is due to the number of variables involved; see Appendix B for the output of this

search), so instead fit tables were produced based on a model containing only the relevant variables, IV:AltrtidRacewRacee:AltrtidRacebRaceh:AltrtidRacesRaceo (Table 4).

Table 4: fit table for three pairs of race variables given DV Altrtid

Racew	Racee	freq	% Altrtid=0	% Altrtid=1	Odds	Odds Ratio
-1	-1	38	10.526	89.474	8.500285009	0.372478617
-1	1	6	16.667	83.333	4.999880002	0.2190924641
1	-1	475	3.579	96.421	26.94076558	1.180532075
1	1	5	0	100	[high]	[high]
		524	4.198	95.802	22.82086708	
Raceb	Raceh					
-1	-1	478	3.975	96.025	24.1572327	1.058558933
-1	1	24	0	100	[high]	[high]
1	-1	20	10	90	9	0.3943759003
1	1	2	50	50	1	0.04381954448
		524	4.198	95.802	22.82086708	
Races	Raceo					
-1	-1	507	4.142	95.858	23.14292612	1.014112481
-1	1	8	12.5	87.5	7	0.3067368113
1	-1	9	0	100	[high]	[high]
		524	4.198	95.802	22.82086708	

Odds and odds ratios marked “high” indicate a set of states where 100 percent of participants identified as alt-right. These included participants who identified as White and East Asian both, Hispanic but not Black, and South Asian but not “Other”. Of these cases, participants identifying as Hispanic but not Black are the most compelling result, given that the other two categories have only a few instances each. A bigger population might help clarify this effect.

The fit table further shows that participants who identified outside the race pairings of Raceb and Raceh, identified as both Races and Raceo, plus participants who identified as White but not East Asian, demonstrated an odds ratio near that of the study average with regards to identifying as alt-right. Finally, we can see that participants identifying as neither White nor East Asian, East Asian but not White, Black but not Hispanic, Black as well as Hispanic, and “Other” but not South Asian all were less than half as likely to identify as alt-right. However, the frequency for all these instances is mostly low, so the same caveat applies as mentioned above--further research with more participants is required to verify this trend.

Discussion

The study upon which this one is based identified two primary sub-groups which its authors contend comprise the alt-right as a whole, with unique motivational attributes ascribed to each (Forscher and Kteily, 2017). These include a “supremacist” sub-group characterized by

aggression and the dehumanization of outsiders, and a “populist” group motivated by maintaining socioeconomic status among certain groups, while dismantling the political establishment. The current study was unable to convincingly replicate these findings, or, indeed, identify much large-scale structure at all.

Trust in media came up as an important factor in multiple analyses in the current paper. A strong inverse relationship was found between trust in The Huffington Post and participant identification as alt-right. Additionally, trust in CBS was a factor in two more models of interest. In the context of the Forscher and Kteily study, this provides limited support to their identification of an alt-right subgroup in part defined by a distrust of media sources.

The finding that certain combinations of race pairings interact to explain more about the data in certain models could inform future research. In particular, the disparate array of non-racial variables included in the model showing this effect aligns with many of the variables attributed to the “supremacy” sub-group identified in the Forscher and Kteily study (although there are also variables present from the populist sub-group). If the race-pairings effect shown here is reproducible, it could further define the profile of the supremacy group. However, further work should be done with greater numbers of participants for confidence in the effect to be established.

There are several limitations in the current analysis, which future research could improve upon. For one, the dataset used here incorporated many different scales, even between structurally similar questions (i.e. five, seven, and nine-point Likert scales, as well as scales of 1-100). In order for Occam to put data from different variables on equal footing with one another, copious rebinning was performed. The result was to make the resolution of the data much coarser. Future work with this dataset could find interesting results either by employing focused searches looking only at clusters of variables with equal, unbinned cardinality, or through different forms of rebinning than what was used here (e.g. equal n in each binning group, etc.).

Another issue was the number of non-responses. In addition to the dataset being on the small side for Occam to find statistically convincing results to begin with, several hundred participants were left out of the current study given the paucity of their responses. This left far fewer instances to analyze than ideal. Occam is optimized to work with larger datasets than what would have been achieved even with no exclusions in the current study, so future work should be done with a larger population pool.

Thirdly, given that most of the results returned in the current study found independence between variables of interest in predicting the DV, more focused statistical tools outside the scope of this paper might be a more fruitful methodology in understanding the variable relationships. Of course, highlighting what areas to look at with other tools is also one of the anticipated benefits of using Occam, so this does not necessarily represent a failure in this study.

References

- Cook, J. (2016, November 07). US election: Trump and the rise of the alt-right. Retrieved from <http://www.bbc.com/news/election-us-2016-37899026>
- Forscher, P. S., & Kteily, N. (2018, January 23). A Psychological Profile of the Alt-Right. Retrieved from psyarxiv.com/c9uww
- Hankes, K., & Amend, A. (2018, February 15). The Alt-Right is Killing People. Retrieved from <https://www.splcenter.org/20180205/alt-right-killing-people>
- Zwick, M. (2004). An overview of reconstructability analysis. *Kybernetes*, 33(5/6), 877-905. doi:10.1108/03684920410533958
- Zwick, M., Alexander, F., Fusion, J., & Willett, K. (2016, February 26). OCCAM: A Reconstructability Analysis Program. Retrieved from <https://www.pdx.edu/sysc/sites/www.pdx.edu/sysc/files/woccaman-2.27.2016.pdf>

Miles Schneider
Data Mining with Information Theory
Dr. Joe Fusion
Submitted March 15th 2018

Appendix A: Variable List

APPENDIX A: Variable list

NAME	NICKNAME	CARDINALITY	INCLUDED?	DESCRIPTION
Finished	Finished	2	No	Did participant finish survey
consent	consent	1	No	Did participant give consent
arrival	arrival	2	Yes	Where Did participant find out about survey
altrightident	altrightident	3	Yes	Did participant identify as alt-right
racewhite	racewhite	2	Yes	Did participant ID as white
raceblack	raceblack	2	Yes	Did participant ID as black
racehispanic	racehispanic	2	Yes	Did participant ID as hispanic
raceeastas	raceeastas	2	Yes	Did participant ID as east asian
racessouthas	racessouthas	2	Yes	Did participant ID as south asian
raceother	raceother	2	Yes	Did participant ID as a race not listed above?
gender	gender	3	Yes	Gender
country	country	20	No	Participant country of origin
snclose1	snclose1	8	No	How close do you feel to friend #1
snclose2	snclose2	8	No	How close do you feel to friend #2
snclose3	snclose3	8	No	How close do you feel to friend #3
snclose4	snclose4	8	No	How close do you feel to friend #4
snclose5	snclose5	8	No	How close do you feel to friend #5
sncloseBIN	sncloseBIN	4	Yes	Binned avg of how close partipant feels to friends
snmoral1	snmoral1	8	No	How similar to your own moral values is friend #1?
snmoral2	snmoral2	8	No	How similar to your own moral values is friend #2?
snmoral3	snmoral3	8	No	How similar to your own moral values is friend #3?
snmoral4	snmoral4	8	No	How similar to your own moral values is friend #4?
snmoral5	snmoral5	8	No	How similar to your own moral values is friend #5?
snmoralBIN	snmoralBIN	4	Yes	Binned avg of how similar partipant feels to friends' morality is to their own
snident1	snident1	8	No	How much does friend #1 identify with the alt-right?
snident2	snident2	8	No	How much does friend #2 identify with the alt-right?
snident3	snident3	8	No	How much does friend #3 identify with the alt-right?
snident4	snident4	8	No	How much does friend #4 identify with the alt-right?
snident5	snident5	8	No	How much does friend #5 identify with the alt-right?
snidBIN	snidBIN	4	Yes	Binned avg of how much friends ID with the alt-right
metainversion1	metai1	8	Yes	"If Black Americans got to the top of the social hierarchy, they would put all of their effort towards creating a more egalitarian social system for all groups. "
metainversion2	metai2	8	Yes	"If Black Americans got to the top of the social hierarchy, they would want to keep a greater share of the power for their group at the expense of other groups. "
metainversion3	metai3	8	Yes	"If Black Americans got to the top of the social hierarchy, they would want to implement a social system where all groups get an equal share of power."
metainversion4	metai4	8	Yes	"Black Americans are highly motivated to "turn the tables" on the groups at the top of the social system and enjoy the advantages they've been enjoying."
metainversion5	metai5	8	Yes	"If Black Americans were on top, they would want the groups currently dominating to suffer. "
metainversion6	metai6	8	Yes	"If Black Americans got to the top of the social hierarchy, they would want to stay on top and keep other groups down. "
Stoppush	stoppush	8	Yes	"Assume that through collective struggle, Black Americans had attained equal social, economic, and political power as Whites. If Black Americans got to that point of exact equality, do you think that Black Americans as a group would be content with stopping right there, or do you think they would want to continue to push for more power?" (1= "stop right there", 7="push for more power")
mfqharm1	mfqharm1	7	Yes	"Compassion for those who are suffering is the most crucial virtue. "
mfqfair1	mfqfair1	7	Yes	"When the government makes laws, the number one principle should be ensuring that everyone is treated fairly."
mfqloyal1	mfqloyal1	7	Yes	"I am proud of my country's history. "
mfqauthority1	mfqauthority1	7	Yes	"Respect for authority is something all children need to learn. "
mfqpurity1	mfqpurity1	7	Yes	"People should not do things that are disgusting, even if no one is harmed. "
mfqfiller	mfqfiller	7	Yes	"It is better to do good than to do bad. "
mfqharm2	mfqharm2	7	Yes	"One of the worst things a person could do is hurt a defenseless animal."
mfqfair2	mfqfair2	7	Yes	"Justice is the most important requirement for a society."
mfqloyal2	mfqloyal2	7	Yes	"People should be loyal to their family members, even when they have done something wrong. "
mfqauthority2	mfqauthority2	7	Yes	"Men and women each have different roles to play in society. "
mfqpurity2	mfqpurity2	7	Yes	"I would call some acts wrong on the grounds that they are unnatural. "
Sdo1	Sdo1	7	Yes	"An ideal society requires some groups to be on top and others to be on the bottom"
sdo2	Sdo2	7	Yes	"Some groups of people are simply inferior to other groups. "
sdo3	Sdo3	7	Yes	"Groups at the bottom are just as deserving as groups at the top."
sdo4	Sdo4	7	Yes	"No one group should dominate in society."
sdo5	Sdo5	7	Yes	"We should work to give all groups an equal chance to succeed"
sdo6	Sdo6	7	Yes	"We should do what we can to equalize conditions for different groups"
darktriadm1	darktriadm1	8	Yes	"It's not wise to tell your secrets."
darktriadm2	darktriadm2	8	Yes	"I like to use clever manipulation to get my way."
darktriadm3	darktriadm3	8	Yes	"Make sure your plans benefit you, not others."
darktriadm4	darktriadm4	8	Yes	"Most people can be manipulated."
darktriadn1	darktriadn1	8	Yes	"People see me as a natural leader."
darktriadn2	darktriadn2	8	Yes	"I hate being the center of attention."
darktriadn3	darktriadn3	8	Yes	"Many group activities tend to be dull without me."

darktriadn4	darktriadn4	8	Yes	"I know that I am special because everyone keeps telling me so"
Darktriadp1	darktriadp1	8	Yes	"I avoid dangerous situations."
darktriadp2	darktriadp2	8	Yes	"Payback needs to be quick and nasty."
darktriadp3	darktriadp3	8	Yes	"People often say I'm out of control."
darktriadp4	darktriadp4	8	Yes	"I'll say anything to get what I want."
Rwa1	Rwa1	8	Yes	"People should pay less attention to the Bible and other old traditional forms of religious guidance and instead develop their own personal standards of what is moral and immoral. "
rwa2	Rwa2	8	Yes	"Obedience and respect for authority are the most important virtues children should learn."
rwa3	Rwa3	8	Yes	"In these troubled times, laws have to be enforced without mercy, especially when dealing with the agitators and revolutionaries who are stirring things up."
rwa4	Rwa4	8	Yes	"Atheists and others who have rebelled against the established religions are no doubt every bit as good and virtuous as those who attend church regularly."
rwa5	Rwa5	8	Yes	"A woman's place should be wherever she wants to be. The days when women are submissive to their husbands and social conventions belong strictly in the past."
rwa6	Rwa6	8	Yes	"Our customs and national heritage are the things that have made us great, and certain people should be made to show greater respect for them."
motivemp1	motemp1	10	Yes	"I express negative thoughts about Black people to avoid negative reactions from others."
motivemp2	motemp2	10	Yes	"I minimize my contact with Black people in order to avoid disapproval from others."
motivemp3	motemp3	10	Yes	"I avoid interactions with Black people because of pressure from others. "
motivimp1	motimp1	10	Yes	"Avoiding interactions with Black people is important to my self-concept. "
motivimp2	motimp2	10	Yes	"Minimizing my contact with Black people is personally important to me. "
motivimp3	motimp3	10	Yes	"My beliefs motivate me to express negative views about Black people. "
motivems1	motems1	10	Yes	"Because of today's PC (politically correct) standards I try to appear non-prejudiced toward Black people. "
motivems2	motems2	10	Yes	"I try to hide any negative thoughts about Black people in order to avoid negative reactions from others. "
motivems3	motems3	10	Yes	"I attempt to appear non-prejudiced toward Black people in order to avoid disapproval from others"
Motivims1	motims1	10	Yes	"I attempt to act in non-prejudiced ways toward Black people because it is personally important to me. "
motivims2	motims2	10	Yes	"I am personally motivated by my beliefs to be non-prejudiced toward Black people"
motivims3	motims3	10	Yes	"Being non-prejudiced toward Black people is important to my self-concept"
Behavioronlinename	behonname	8	Yes	"Online, called another person a name that they found offensive "
behaviorofflinename	behofname	8	Yes	"In person, called another person a name that they found offensive"
behavioronlinethreat	behonthreat	8	Yes	"Online, physically threatened another person"
Behaviorofflinethreat	behofthreat	8	Yes	"In person, physically threatened another person"
behavioronlineharrass	behonharrass	8	Yes	"Online, contacted another person after they asked you to stop"
behaviorofflineharrass	behofharrass	8	Yes	"In person, contacted another person after they asked you to stop"
behavioronlinestatement	behonstatement	8	Yes	"Online, made a statement because others find it offensive"
behaviorofflinestatement	behofstatement	8	Yes	"In person, made a statement because others find it offensive"
behaviordox	behdox	8	Yes	"Made public personal information about another person without their consent"
Behaviormeme	behmeme	8	Yes	"Shared a meme because others find it offensive"
Blatantblack1	blatblk1	8	Yes	"Black people are...Refined and cultured"
blatantblack2	blatblk2	8	Yes	"Black people are...Rational and logical"
blatantblack3	blatblk3	8	Yes	"Black people are...Backward, primitive"
blatantblack4	blatblk4	8	Yes	"Black people are...Savage, aggressive"
blatantblack5	blatblk5	8	Yes	"Black people are...Lacking morals"
blatantblack6	blatblk6	8	Yes	"Black people are...Barbaric, cold-hearted"
blatantblack7	blatblk7	8	Yes	"Black people are...Capable of self-control"
blatantblack8	blatblk8	8	Yes	"Black people are...Mature, responsible"
blatantblack9	blatblk9	8	Yes	"Black people are...Genetically inferior"
Blatantwhite1	blatwht1	8	Yes	"White people are...Refined and cultured"
blatantwhite2	blatwht2	8	Yes	"White people are...Rational and logical"
blatantwhite3	blatwht3	8	Yes	"White people are...Backward, primitive"
blatantwhite4	blatwht4	8	Yes	"White people are...Savage, aggressive"
blatantwhite5	blatwht5	8	Yes	"White people are...Lacking morals"
blatantwhite6	blatwht6	8	Yes	"White people are...Barbaric, cold-hearted"
blatantwhite7	blatwht7	8	Yes	"White people are...Capable of self-control"
blatantwhite8	blatwht8	8	Yes	"White people are...Mature, responsible"
blatantwhite9	blatwht9	8	Yes	"White people are...Genetically inferior"
Ascentamerican	ascamer	101	No	"Using the sliders below, indicate how evolved you consider each of the following individuals or groups to be. (American)"
ascentamerBIN	ascentamerBIN	4	Yes	Ascent scale binned (American)
Ascenteurop	Ascenteurop	101	No	"Using the sliders below, indicate how evolved you consider each of the following individuals or groups to be. (European)"
asceurBIN	asceurBIN	4	Yes	Ascent scale binned (European)
ascentarab	ascentarab	101	No	"Using the sliders below, indicate how evolved you consider each of the following individuals or groups to be. (Arab)"
ascarabBIN	ascarabBIN	4	Yes	Ascent scale binned (Arab)
ascentswede	ascentswede	101	No	"Using the sliders below, indicate how evolved you consider each of the following individuals or groups to be. (Swede)"
ascswBIN	ascswBIN	4	Yes	Ascent scale binned (Swede)
ascntniger	ascniger	101	No	"Using the sliders below, indicate how evolved you consider each of the following individuals or groups to be. (Nigerian)"

ascnigBIN	ascnigBIN	4	Yes	Ascent scale binned (Nigerian)
ascnturussia	ascrturussia	101	No	"Using the sliders below, indicate how evolved you consider each of the following individuals or groups to be." (Russia)
ascrusBIN	ascrusBIN	4	Yes	Ascent scale binned (Russia)
ascntmuslim	ascntmuslim	101	No	"Using the sliders below, indicate how evolved you consider each of the following individuals or groups to be." (Muslim)
ascmusBIN	ascmusBIN	4	Yes	Ascent scale binned (Muslim)
ascntmex	ascntmex	101	No	"Using the sliders below, indicate how evolved you consider each of the following individuals or groups to be." (Mexican)
ascmexBIN	ascmexBIN	4	Yes	Ascent scale binned (Mexican)
ascntwhite	ascwhite	101	No	"Using the sliders below, indicate how evolved you consider each of the following individuals or groups to be." (White)
ascwhtBIN	ascwhtBIN	4	Yes	Ascent scale binned (White)
ascntblack	ascntblack	101	No	"Using the sliders below, indicate how evolved you consider each of the following individuals or groups to be." (Black)
ascblkBIN	ascblkBIN	4	Yes	Ascent scale binned (Black)
ascntturk	ascntturk	101	No	"Using the sliders below, indicate how evolved you consider each of the following individuals or groups to be." (Turks)
ascsturBIN	ascsturBIN	4	Yes	Ascent scale binned (Turks)
ascntdonald	ascntdonald	101	No	"Using the sliders below, indicate how evolved you consider each of the following individuals or groups to be." (Donald Trump)
ascdonBIN	ascdonBIN	4	Yes	Ascent scale binned (Donald Trump)
ascnthillary	ascnthillary	101	No	"Using the sliders below, indicate how evolved you consider each of the following individuals or groups to be." (Hillary Clinton)
ascchilBIN	ascchilBIN	4	Yes	Ascent scale binned (Hillary Clinton)
ascntdem	ascntdem	101	No	"Using the sliders below, indicate how evolved you consider each of the following individuals or groups to be." (Democrats)
ascdemBIN	ascdemBIN	4	Yes	Ascent scale binned (Democrats)
ascntrep	ascntrep	101	No	"Using the sliders below, indicate how evolved you consider each of the following individuals or groups to be." (Republicans)
ascprepBIN	ascprepBIN	4	Yes	Ascent scale binned (Republicans)
ascntchrist	ascchrist	101	No	"Using the sliders below, indicate how evolved you consider each of the following individuals or groups to be." (Christians)
ascchristBIN	ascchristBIN	4	Yes	Ascent scale binned (Christians)
ascntjew	ascntjew	101	No	"Using the sliders below, indicate how evolved you consider each of the following individuals or groups to be." (Jews)
ascjewBIN	ascjewBIN	4	Yes	Ascent scale binned (Jews)
ascntfeminist	ascntfeminist	101	No	"Using the sliders below, indicate how evolved you consider each of the following individuals or groups to be." (Feminists)
ascfemBIN	ascfemBIN	4	Yes	Ascent scale binned (Feminists)
ascntmen	ascmen	101	No	"Using the sliders below, indicate how evolved you consider each of the following individuals or groups to be." (Men)
ascmenBIN	ascmenBIN	4	Yes	Ascent scale binned (Men)
ascntwomen	ascntwomen	101	No	"Using the sliders below, indicate how evolved you consider each of the following individuals or groups to be." (Women)
ascwomBIN	ascwomBIN	4	Yes	Ascent scale binned (Women)
ascntrepref	ascntrepref	101	No	"Using the sliders below, indicate how evolved you consider each of the following individuals or groups to be." (Republicans who refused to vote for Trump)
asreprefBIN	asreprefBIN	4	Yes	Ascent scale binned (Republicans who refused to vote for Trump)
ascntdemref	ascntdemref	101	No	"Using the sliders below, indicate how evolved you consider each of the following individuals or groups to be." (Democrats who refused to vote for Clinton)
asdemrefBIN	asdemrefBIN	4	Yes	Ascent scale binned (Democrats who refused to vote for Clinton)
ascntjournalist	ascntjournalist	101	No	"Using the sliders below, indicate how evolved you consider each of the following individuals or groups to be." (Journalists from mainstream media outlets)
ascjouBIN	ascjouBIN	4	Yes	Ascent scale binned (Journalists from mainstream media outlets)
ascntgovt	ascgovt	101	No	"Using the sliders below, indicate how evolved you consider each of the following individuals or groups to be." (Government employees)
ascgovBIN	ascgovBIN	4	Yes	Ascent scale binned (Government employees)
vote	vote	7	Yes	"Which presidential candidate did you vote for in the 2016 election?" (Each number codes one Donald Trump (1), Hillary Clinton (2), Jill Stein (3), Gary Johnson (4), Another candidate (5), I didn't vote (6))
trumpsatis	trumpsatis	8	Yes	"Overall, how satisfied or dissatisfied are you with President Trump's job performance?"
trumpally	trumpally	8	Yes	"To what extent do you feel that President Trump is an ally of the alt-right movement?"
Countrysatis	countrysatis	8	Yes	"Overall, how satisfied or dissatisfied are you with the way things are going in the United States?"
Natsit	natsit	5	Yes	"Think about the national economic situation. How would you describe the current economic situation in the US — is it very bad, somewhat bad, somewhat good, or very good?"
Natimp	natimp	6	Yes	"Over the next 12 months, do you expect the national economic situation to worsen a lot, worsen a little, remain the same, improve a little, or improve a lot?"
Perssit	perssit	5	Yes	"Think about your personal economic situation. How would you describe your own current economic situation — is it very bad, somewhat bad, somewhat good, or very good?"
Persimp	persimp	6	Yes	"Over the next 12 months, do you expect your personal economic situation to worsen a lot, worsen a little, remain the same, improve a little, or improve a lot?"
Mediacnn	Mediacnn	101	No	Trust in media outlet CNN
mediacnn	mediacnn	4	Yes	Trust in media outlet (Binned CNN)
Mediaeconomist	Mediaeconomist	101	No	Trust in media outlet - The Economist
mediaecon	mediaecon	4	Yes	Trust in media outlet (Binned The Economist)
medianyt	medianyt	101	No	Trust in media outlet - The New York Times
medianyt	medianyt	4	Yes	Trust in media outlet (Binned The New York Times)
mediafox	mediafox	101	No	Trust in media outlet - Fox

mediafox	mediafox	4	Yes	Trust in media outlet (Binned Fox)
mediawashpo	mediawashpo	101	No	Trust in media outlet - Washington Post
mediawash	mediawash	4	Yes	Trust in media outlet (Binned Washington Post)
mediabbc	mediabbc	101	No	Trust in media outlet - BBC
mediabcc	mediabcc	4	Yes	Trust in media outlet (Binned BBC)
mediawsj	mediawsj	101	No	Trust in media outlet - Wall St. Journal
mediawsj	mediawsj	4	Yes	Trust in media outlet (Binned Wall St. Journal)
mediablaze	mediablaze	101	No	Trust in media outlet - Blaze
mediablz	mediablz	4	Yes	Trust in media outlet (Binned Blaze)
mediadrudge	mediadrudge	101	No	Trust in media outlet - Drudge Report
mediadrud	mediadrud	4	Yes	Trust in media outlet (Binned Drudge Report)
mediaabc	mediaabc	101	No	Trust in media outlet - ABC
mediaabc	mediaabc	4	Yes	Trust in media outlet (Binned ABC)
mediacbs	mediacbs	101	No	Trust in media outlet - CBS
mediacbs	mediacbs	4	Yes	Trust in media outlet (Binned CBS)
medianbc	medianbc	101	No	Trust in media outlet - NBC
medianbc	medianbc	4	Yes	Trust in media outlet (Binned NBC)
mediainfowars	mediainfowars	101	No	Trust in media outlet - Infowars
mediainfo	mediainfo	4	Yes	Trust in media outlet (Binned Infowars)
mediadailycaller	mediadailycaller	101	No	Trust in media outlet - The Daily Caller
mediadaycal	mediadaycal	4	Yes	Trust in media outlet (Binned The Daily Caller)
mediabreitbart	mediabreitbart	101	No	Trust in media outlet - Breitbart
mediabreit	mediabreit	4	Yes	Trust in media outlet (Binned Breitbart)
mediarush	mediarush	101	No	Trust in media outlet - The Rush Limbaugh Show
mediarush	mediarush	4	Yes	Trust in media outlet (Binned The Rush Limbaugh Show)
mediabuzzfeed	mediabuzzfeed	101	No	Trust in media outlet - Buzzfeed
mediabuzz	mediabuzz	4	Yes	Trust in media outlet (Binned Buzzfeed)
mediamsnbc	mediamsnbc	101	No	Trust in media outlet - MSNBC
medianbc	medianbc	4	Yes	Trust in media outlet (Binned MSNBC)
mediarachel	mediarachel	101	No	Trust in media outlet - Rachel Maddow Show
mediarach	mediarach	4	Yes	Trust in media outlet (Binned Rachel Maddow Show)
mediahuffpo	mediahuffpo	101	No	Trust in media outlet - Huffington Post
mediahuff	mediahuff	4	Yes	Trust in media outlet (Binned Huffington Post)
mediasean	mediasean	101	No	Trust in media outlet - The Sean Hannity Show
mediasean	mediasean	4	Yes	Trust in media outlet (Binned The Sean Hannity Show)
mediaglenn	mediaglenn	101	No	Trust in media outlet - The Glenn Beck Show
mediaglenn	mediaglenn	4	Yes	Trust in media outlet - (Binned The Glenn Beck Show)
Discwhite	discwhite	6	Yes	Please read over the following groups and rate the extent to which they currently receive advantages and disadvantages due to discrimination - White
discblack	discblack	6	Yes	Please read over the following groups and rate the extent to which they currently receive advantages and disadvantages due to discrimination - Black
discmuslim	discmuslim	6	Yes	Please read over the following groups and rate the extent to which they currently receive advantages and disadvantages due to discrimination - Muslim
dischispanic	dischispanic	6	Yes	Please read over the following groups and rate the extent to which they currently receive advantages and disadvantages due to discrimination - Hispanic
discmen	discmen	6	Yes	Please read over the following groups and rate the extent to which they currently receive advantages and disadvantages due to discrimination - Men
discwomen	discwomen	6	Yes	Please read over the following groups and rate the extent to which they currently receive advantages and disadvantages due to discrimination - Women
discdem	discdem	6	Yes	Please read over the following groups and rate the extent to which they currently receive advantages and disadvantages due to discrimination - Democrats
discrep	discrep	6	Yes	Please read over the following groups and rate the extent to which they currently receive advantages and disadvantages due to discrimination - Republicans
discaltright	discaltright	6	Yes	Please read over the following groups and rate the extent to which they currently receive advantages and disadvantages due to discrimination - Alt-Right
discimm	discimm	6	Yes	Please read over the following groups and rate the extent to which they currently receive advantages and disadvantages due to discrimination - Immigrants
Problemsdiscwhite	Problemsdiscwhite	8	Yes	How much of a problem is discrimination against white people
problemsdiscblack	problemsdiscblack	8	Yes	How much of a problem is discrimination against black people
problemsdiscmen	problemsdiscmen	8	Yes	How much of a problem is discrimination against men
problemsdiscwomen	problemsdiscwomen	8	Yes	How much of a problem is discrimination against women
problemscorrupt	problemscorrupt	8	Yes	How much of a problem is government corruption
problemselitegap	problemselitegap	8	Yes	How much of a problem is the gap between Washington elites and common folk
problemsrichgap	problemsrichgap	8	Yes	How much of a problem is the gap between the rich and the poor
problemscrime	problemscrime	8	Yes	How much of a problem is crime
problemshealth	problemshealth	8	Yes	How much of a problem is access to healthcare
problemsclimate	problemsclimate	8	Yes	How much of a problem is climate change
problemsimm	problemsimm	8	Yes	How much of a problem is illegal immigration
Problemsterror	Problemsterror	8	Yes	How much of a problem is Islamic terrorism
problemspc	problemspc	8	Yes	How much of a problem is political correctness
wlm1	wlm1	8	Yes	"I think there are good reasons to have organizations that look out for the interests of Whites."
wlm2	wlm2	8	Yes	"More needs to be done so that people remember that "White Lives" also matter."
wlm3	wlm3	8	Yes	"Whites need to do more to remind the world about the challenges that White people face."

wlm4	wlm4	8	Yes	"Whites should lobby to repeal laws that give minorities an advantage on the basis of their race, at the expense of Whites."
wlm5	wlm5	8	Yes	"Whites need to start looking out more for one another. "
Blmsupport	blmsupport	8	Yes	I support the Black Lives Matter movement.
blmharm	blmharm	8	Yes	I think that the Black Lives Matter movement has been very harmful to our country
blmdivide	blmdivide	8	Yes	I think that the Black Lives Matter movement is racially divisive.
policerespect	policerespect	8	Yes	Police officers don't get the respect they deserve in this country
policedisc	policedisc	8	Yes	I think that Black and White people are treated very differently by the police
policeracist	policeracist	8	Yes	I think that racism is deeply woven into law enforcement
altrightident2	altrtid2	3	No	We have already asked you this question, but it's really important that we know the honest answer. Your response will not affect your compensation in any way. Do you identify with the alt-right movement?

Miles Schneider
Data Mining with Information Theory
Dr. Joe Fusion
Submitted March 15th 2018

Appendix B: Disjoint model fit table attempt



version 3.4.0 — Tue Mar 13 12:28:22 2018

Warning: input data cardinality for variable mfggharm1 (Mfggharm1) is 3, but was specified as 4. The lower value will be used.

Option settings:

```

action          search
nominal        Finished, 2, 0, Finished
nominal        consent, 1, 0, consent
nominal        arrival, 2,0,arrival
nominal        altrightident, 3, 2, altrtid, exclude(-)
nominal        racewhite, 2, 1, racew
nominal        raceblack, 2, 1, raceb
nominal        racehispanic, 2, 1, raceh
nominal        raceeastas, 2, 1, racee
nominal        racesouthas, 2, 1, races
nominal        raceother, 2, 1, raceo
nominal        gender, 3, 1, gender
nominal        country, 20, 0, country
nominal        snclose1, 8, 0, snclose1
nominal        Snclose2, 8, 0, snclose2
nominal        snclose3, 8, 0, snclose3
nominal        snclose4, 8, 0, snclose4
nominal        snclose5, 8, 0, snclose5
nominal        sncloseBIN, 4,1,snclosebin
nominal        snmoral1, 8, 0, snmoral1
nominal        snmoral2, 8, 0, snmoral2
nominal        snmoral3, 8, 0, snmoral3
nominal        snmoral4, 8, 0, snmoral4
nominal        snmoral5, 8, 0, snmoral5
nominal        snmoralBIN, 4,1,snmoralbin
nominal        snident1, 8, 0, snident1
nominal        snident2, 8, 0, snident2
nominal        snident3, 8, 0, snident3
nominal        snident4, 8, 0, snident4
nominal        snident5, 8, 0, snident5
nominal        snidBIN, 4,1,snidbin
nominal        metainversion1, 8,1, metai1,[-1(-1);1(1,2);2(3,4,5);3(6,7)]
nominal        metainversion2, 8,1, metai2,[-1(-1);1(1,2);2(3,4,5);3(6,7)]
nominal        metainversion3, 8,1, metai3,[-1(-1);1(1,2);2(3,4,5);3(6,7)]
nominal        metainversion4, 8,1, metai4,[-1(-1);1(1,2);2(3,4,5);3(6,7)]
nominal        metainversion5, 8,1, metai5,[-1(-1);1(1,2);2(3,4,5);3(6,7)]
nominal        metainversion6, 8,1, metai6,[-1(-1);1(1,2);2(3,4,5);3(6,7)]
nominal        Stoppush, 8, 1, stoppush,[-1(-1);1(1,2);2(3,4,5);3(6,7)]
nominal        mfggharm1, 7,1, mfggharm1,[99(99);1(0,1);2(2,3);3(4,5)]
nominal        mfgqfair1, 7,1, mfgqfair1,[99(99);1(0,1);2(2,3);3(4,5)]
nominal        mfgqloyall, 7,1, mfgqloyall,[99(99);1(0,1);2(2,3);3(4,5)]
nominal        mfgqauthority1, 7,1, mfgqauthority1,[99(99);1(0,1);2(2,3);3(4,5)]
nominal        mfgqpurity1, 7,1, mfgqpurity1,[99(99);1(0,1);2(2,3);3(4,5)]
nominal        mfgqfiller, 7,1, mfgqfiller,[99(99);1(0,1);2(2,3);3(4,5)]
nominal        mfggharm2, 7,1, mfggharm2,[99(99);1(0,1);2(2,3);3(4,5)]
nominal        mfgqfair2, 7,1, mfgqfair2,[99(99);1(0,1);2(2,3);3(4,5)]
nominal        mfgqloyal2, 7,1, mfgqloyal2,[99(99);1(0,1);2(2,3);3(4,5)]
nominal        mfgqauthority2, 7,1, mfgqauthority2,[99(99);1(0,1);2(2,3);3(4,5)]
nominal        mfgqpurity2, 7,1, mfgqpurity2,[99(99);1(0,1);2(2,3);3(4,5)]
nominal        Sdo1, 7,1, Sdo1,[-1(-1);1(1,2);2(3,4,5);3(6,7)]
nominal        sdo2, 7,1, Sdo2,[-1(-1);1(1,2);2(3,4,5);3(6,7)]
nominal        sdo3, 7,1, Sdo3,[-1(-1);1(1,2);2(3,4,5);3(6,7)]
nominal        sdo4, 7,1, Sdo4,[-1(-1);1(1,2);2(3,4,5);3(6,7)]
nominal        sdo5, 7,1, Sdo5,[-1(-1);1(1,2);2(3,4,5);3(6,7)]
nominal        sdo6, 7,1, Sdo6,[-1(-1);1(1,2);2(3,4,5);3(6,7)]
nominal        darktriadm1, 8,1,darktriadm1,[-1(-1);1(1,2);2(3,4,5);3(6,7)]
nominal        darktriadm2, 8,1,darktriadm2,[-1(-1);1(1,2);2(3,4,5);3(6,7)]
nominal        darktriadm3, 8,1,darktriadm3,[-1(-1);1(1,2);2(3,4,5);3(6,7)]
nominal        darktriadm4, 8,1,darktriadm4,[-1(-1);1(1,2);2(3,4,5);3(6,7)]
nominal        darktriadn1, 8,1,darktriadn1,[-1(-1);1(1,2);2(3,4,5);3(6,7)]
nominal        darktriadn2, 8,1,darktriadn2,[-1(-1);1(1,2);2(3,4,5);3(6,7)]
nominal        darktriadn3, 8,1,darktriadn3,[-1(-1);1(1,2);2(3,4,5);3(6,7)]
nominal        darktriadn4, 8,1,darktriadn4,[-1(-1);1(1,2);2(3,4,5);3(6,7)]
nominal        Darktriadp1, 8,1,darktriadp1,[-1(-1);1(1,2);2(3,4,5);3(6,7)]
nominal        darktriadp2, 8,1,darktriadp2,[-1(-1);1(1,2);2(3,4,5);3(6,7)]
nominal        darktriadp3, 8,1,darktriadp3,[-1(-1);1(1,2);2(3,4,5);3(6,7)]

```

```

nominal      darktriadp4, 8,1,darktriadp4,[-1(-1);1(1,2);2(3,4,5);3(6,7)]
nominal      Rwa1, 8, 1, Rwa1,[-1(-1);1(1,2);2(3,4,5);3(6,7)]
nominal      rwa2, 8, 1, Rwa2,[-1(-1);1(1,2);2(3,4,5);3(6,7)]
nominal      rwa3, 8, 1, Rwa3,[-1(-1);1(1,2);2(3,4,5);3(6,7)]
nominal      rwa4, 8, 1, Rwa4,[-1(-1);1(1,2);2(3,4,5);3(6,7)]
nominal      rwa5, 8, 1, Rwa5,[-1(-1);1(1,2);2(3,4,5);3(6,7)]
nominal      rwa6, 8, 1, Rwa6,[-1(-1);1(1,2);2(3,4,5);3(6,7)]
nominal      motivemp1, 10,1,motemp1,[-1(-1);1(1,2,3);2(4,5,6);3(7,8,9)]
nominal      motivemp2, 10,1,motemp2,[-1(-1);1(1,2,3);2(4,5,6);3(7,8,9)]
nominal      motivemp3, 10,1,motemp3,[-1(-1);1(1,2,3);2(4,5,6);3(7,8,9)]
nominal      motivimp1, 10,1,motimp1,[-1(-1);1(1,2,3);2(4,5,6);3(7,8,9)]
nominal      motivimp2, 10,1,motimp2,[-1(-1);1(1,2,3);2(4,5,6);3(7,8,9)]
nominal      motivimp3, 10,1,motimp3,[-1(-1);1(1,2,3);2(4,5,6);3(7,8,9)]
nominal      motivems1, 10,1,motems1,[-1(-1);1(1,2,3);2(4,5,6);3(7,8,9)]
nominal      motivems2, 10,1,motems2,[-1(-1);1(1,2,3);2(4,5,6);3(7,8,9)]
nominal      motivems3, 10,1,motems3,[-1(-1);1(1,2,3);2(4,5,6);3(7,8,9)]
nominal      Motivims1, 10,1,motims1,[-1(-1);1(1,2,3);2(4,5,6);3(7,8,9)]
nominal      motivims2, 10,1,motims2,[-1(-1);1(1,2,3);2(4,5,6);3(7,8,9)]
nominal      motivims3, 10,1,motims3,[-1(-1);1(1,2,3);2(4,5,6);3(7,8,9)]
nominal      Behavioronlinename, 8,1,behonname,[-1(-1);1(1,2);2(3,4,5);3(6,7)]
nominal      behaviorofflinename, 8,1,behofname,[-1(-1);1(1,2);2(3,4,5);3(6,7)]
nominal      behavioronlinethreat, 8,1,behonthreat,[-1(-1);1(1,2);2(3,4,5);3(6,7)]
nominal      Behaviorofflinethreat, 8,1,behofthreat,[-1(-1);1(1,2);2(3,4,5);3(6,7)]
nominal      behavioronlineharrass, 8,1,behonharrass,[-1(-1);1(1,2);2(3,4,5);3(6,7)]
nominal      behaviorofflineharrass, 8,1,behofharrass,[-1(-1);1(1,2);2(3,4,5);3(6,7)]
nominal      behavioronlinestatement, 8,1,behonstatement,[-1(-1);1(1,2);2(3,4,5);3(6,7)]
nominal      behaviorofflinestatement, 8,1,behofstatement,[-1(-1);1(1,2);2(3,4,5);3(6,7)]
nominal      behaviordox, 8,1,behdox,[-1(-1);1(1,2);2(3,4,5);3(6,7)]
nominal      Behaviormeme, 8,1,behmeme,[-1(-1);1(1,2);2(3,4,5);3(6,7)]
nominal      Blatantblack1, 8,1,blatblk1,[-1(-1);1(1,2);2(3,4,5);3(6,7)]
nominal      blatantblack2, 8,1,blatblk2,[-1(-1);1(1,2);2(3,4,5);3(6,7)]
nominal      blatantblack3, 8,1,blatblk3,[-1(-1);1(1,2);2(3,4,5);3(6,7)]
nominal      blatantblack4, 8,1,blatblk4,[-1(-1);1(1,2);2(3,4,5);3(6,7)]
nominal      blatantblack5, 8,1,blatblk5,[-1(-1);1(1,2);2(3,4,5);3(6,7)]
nominal      blatantblack6, 8,1,blatblk6,[-1(-1);1(1,2);2(3,4,5);3(6,7)]
nominal      blatantblack7, 8,1,blatblk7,[-1(-1);1(1,2);2(3,4,5);3(6,7)]
nominal      blatantblack8, 8,1,blatblk8,[-1(-1);1(1,2);2(3,4,5);3(6,7)]
nominal      blatantblack9, 8,1,blatblk9,[-1(-1);1(1,2);2(3,4,5);3(6,7)]
nominal      Blatantwhite1, 8,1,blatwht1,[-1(-1);1(1,2);2(3,4,5);3(6,7)]
nominal      blatantwhite2, 8,1,blatwht2,[-1(-1);1(1,2);2(3,4,5);3(6,7)]
nominal      blatantwhite3, 8,1,blatwht3,[-1(-1);1(1,2);2(3,4,5);3(6,7)]
nominal      blatantwhite4, 8,1,blatwht4,[-1(-1);1(1,2);2(3,4,5);3(6,7)]
nominal      blatantwhite5, 8,1,blatwht5,[-1(-1);1(1,2);2(3,4,5);3(6,7)]
nominal      blatantwhite6, 8,1,blatwht6,[-1(-1);1(1,2);2(3,4,5);3(6,7)]
nominal      blatantwhite7, 8,1,blatwht7,[-1(-1);1(1,2);2(3,4,5);3(6,7)]
nominal      blatantwhite8, 8,1,blatwht8,[-1(-1);1(1,2);2(3,4,5);3(6,7)]
nominal      blatantwhite9, 8,1,blatwht9,[-1(-1);1(1,2);2(3,4,5);3(6,7)]
nominal      Ascentamerican, 101,0,ascamer
nominal      ascentamerBIN, 4,1,ascamerBIN
nominal      Ascenteuropa, 101,0,asceurope
nominal      asceurBIN, 4,1,asceurBIN
nominal      ascentarab, 101,0,ascarab
nominal      ascarabBIN, 4,1,ascarabBIN
nominal      ascentswede, 101,0,ascswede
nominal      ascswBIN, 4,1,ascswBIN
nominal      ascentniger, 101,0,ascniger
nominal      ascnigBIN, 4,1,ascnigBIN
nominal      ascentrussia, 101,0,ascrussia
nominal      ascrusBIN, 4,1,ascrusBIN
nominal      ascentmuslim, 101,0,ascmuslim
nominal      ascmusBIN, 4,1,ascmusBIN
nominal      ascentmex, 101,0,ascmex
nominal      ascmeBIN, 4,1,ascmeBIN
nominal      ascentwhite, 101,0,ascwhite
nominal      ascwhtBIN, 4,1,ascwhtBIN
nominal      ascentblack, 101,0,ascblack
nominal      ascblkBIN, 4,1,ascblkBIN
nominal      ascentturk, 101,0,ascturk
nominal      ascturBIN, 4,1,ascturBIN
nominal      ascentdonald, 101,0,ascdonald
nominal      ascdonBIN, 4,1,ascdonBIN
nominal      ascenthillary, 101,0,aschillary
nominal      aschilBIN, 4,1,aschilBIN
nominal      ascentdem, 101,0,ascdem
nominal      ascdemBIN, 4,1,ascdemBIN
nominal      ascentrep, 101,0,ascrep
nominal      ascrepBIN, 4,1,ascrepBIN

```

nominal ascentchrist, 101,0,ascchrist
 nominal ascchristBIN, 4,1,ascchrsBIN
 nominal ascentjew, 101,0,ascjew
 nominal ascjewBIN, 4,1,ascjewBIN
 nominal ascentfeminist, 101,0,ascfeminist
 nominal ascfemBIN, 4,1,ascfemBIN
 nominal ascentmen, 101,0,ascmen
 nominal ascmenBIN, 4,1,ascmenBIN
 nominal ascentwomen, 101,0,ascwomen
 nominal ascwomBIN, 4,1,ascwomBIN
 nominal ascentrepref, 101,0,ascrepref
 nominal asreprefBIN, 4,1,asreprefBIN
 nominal ascentdemref, 101,0,ascdemref
 nominal asdemrefBIN, 4,1,asdemrefBIN
 nominal ascentjournalist, 101,0,ascjournalist
 nominal ascjouBIN, 4,1,ascjouBIN
 nominal ascentgovt, 101,0,ascgovt
 nominal ascgovBIN, 4,1,ascgovBIN
 nominal vote, 7,1,vote,[-1(-1);1(1,2);2(3,4);3(5,6)]
 nominal trumpsatis, 8,1 ,trumpsatis,[-1(-1);1(1,2);2(3,4,5);3(6,7)]
 nominal trumpally, 8,1,trumpally,[-1(-1);1(1,2);2(3,4,5);3(6,7)]
 nominal Countrysatis, 8,1,countrysatis,[-1(-1);1(1,2);2(3,4,5);3(6,7)]
 nominal Natsit, 5,1,natsit
 nominal Natimp, 6,1,natimp,[-1(-1);1(1,2);2(3);3(4,5)]
 nominal Perssit, 5,1,perssit
 nominal Persimp, 6,1,persimp,[-1(-1);1(1,2);2(3);3(4,5)]
 nominal Mediacnn, 101, 0, Mediacnn,[-1(-1);1(0,1,2,3,4,5,6,7,8,9,10,11,12,13,14,15,16,17,18,19,20,21,22,23,24,25,26,27,28,29,30)]
 nominal mediaccn, 4,1,medcnn
 nominal Mediaeconomist, 101, 0, Mediacnn,[-1(-1);1(0,1,2,3,4,5,6,7,8,9,10,11,12,13,14,15,16,17,18,19,20,21,22,23,24,25,26,27,28,29,30)]
 nominal mediaecon, 4,1,medecon
 nominal medianyt, 101, 0, medianyt,[-1(-1);1(0,1,2,3,4,5,6,7,8,9,10,11,12,13,14,15,16,17,18,19,20,21,22,23,24,25,26,27,28,29,30)]
 nominal medianyt, 4,1,mednyt
 nominal mediafox, 101, 0, mediafox,[-1(-1);1(0,1,2,3,4,5,6,7,8,9,10,11,12,13,14,15,16,17,18,19,20,21,22,23,24,25,26,27,28,29,30)]
 nominal mediafox, 4,1,medfox
 nominal mediawashpo, 101, 0, mediawashpo,[-1(-1);1(0,1,2,3,4,5,6,7,8,9,10,11,12,13,14,15,16,17,18,19,20,21,22,23,24,25,26,27,28,29,30)]
 nominal mediawash, 4,1,medwash
 nominal mediabbc, 101, 0, mediabbc,[-1(-1);1(0,1,2,3,4,5,6,7,8,9,10,11,12,13,14,15,16,17,18,19,20,21,22,23,24,25,26,27,28,29,30)]
 nominal mediabcc, 4,1,medbcc
 nominal mediawsj, 101, 0, mediawsj,[-1(-1);1(0,1,2,3,4,5,6,7,8,9,10,11,12,13,14,15,16,17,18,19,20,21,22,23,24,25,26,27,28,29,30)]
 nominal mediawsj, 4,1,medwsj
 nominal mediablaze, 101, 0, mediablaze,[-1(-1);1(0,1,2,3,4,5,6,7,8,9,10,11,12,13,14,15,16,17,18,19,20,21,22,23,24,25,26,27,28,29,30)]
 nominal mediablz, 4,1,medblz
 nominal mediadrudge, 101, 0, mediadrudge,[-1(-1);1(0,1,2,3,4,5,6,7,8,9,10,11,12,13,14,15,16,17,18,19,20,21,22,23,24,25,26,27,28,29,30)]
 nominal mediadrud, 4,1,meddrud
 nominal mediaabc, 101, 0, mediaabc,[-1(-1);1(0,1,2,3,4,5,6,7,8,9,10,11,12,13,14,15,16,17,18,19,20,21,22,23,24,25,26,27,28,29,30)]
 nominal mediaabc, 4,1,medabc
 nominal mediacbs, 101, 0, mediacbs,[-1(-1);1(0,1,2,3,4,5,6,7,8,9,10,11,12,13,14,15,16,17,18,19,20,21,22,23,24,25,26,27,28,29,30)]
 nominal mediacbs, 4,1,medcbs
 nominal medianbc, 101, 0, medianbc,[-1(-1);1(0,1,2,3,4,5,6,7,8,9,10,11,12,13,14,15,16,17,18,19,20,21,22,23,24,25,26,27,28,29,30)]
 nominal medianbc, 4,1,mednbc
 nominal mediainfowars, 101, 0, mediainfowars,[-1(-1);1(0,1,2,3,4,5,6,7,8,9,10,11,12,13,14,15,16,17,18,19,20,21,22,23,24,25,26,27,28,29,30)]
 nominal mediainfo, 4,1,medinfo
 nominal mediadailycaller, 101, 0, mediadailycaller,[-1(-1);1(0,1,2,3,4,5,6,7,8,9,10,11,12,13,14,15,16,17,18,19,20,21,22,23,24,25,26,27,28,29,30)]
 nominal mediadaycal, 4,1,meddaycal
 nominal mediabreitbart, 101, 0, mediabreitbart,[-1(-1);1(0,1,2,3,4,5,6,7,8,9,10,11,12,13,14,15,16,17,18,19,20,21,22,23,24,25,26,27,28,29,30)]
 nominal mediabreit, 4,1,medbreit
 nominal mediarush, 101, 0, mediarush,[-1(-1);1(0,1,2,3,4,5,6,7,8,9,10,11,12,13,14,15,16,17,18,19,20,21,22,23,24,25,26,27,28,29,30)]
 nominal mediarush, 4,1,medrush
 nominal mediabuzzfeed, 101, 0, mediabuzzfeed,[-1(-1);1(0,1,2,3,4,5,6,7,8,9,10,11,12,13,14,15,16,17,18,19,20,21,22,23,24,25,26,27,28,29,30)]
 nominal mediabuzz, 4,1,medbuzz
 nominal mediamsnbc, 101, 0, mediamsnbc,[-1(-1);1(0,1,2,3,4,5,6,7,8,9,10,11,12,13,14,15,16,17,18,19,20,21,22,23,24,25,26,27,28,29,30)]
 nominal medianbc, 4,1,mednbc
 nominal mediarachel, 101, 0, mediarachel,[-1(-1);1(0,1,2,3,4,5,6,7,8,9,10,11,12,13,14,15,16,17,18,19,20,21,22,23,24,25,26,27,28,29,30)]
 nominal mediarach, 4,1,medrach
 nominal mediahuffpo, 101, 0, mediahuffpo,[-1(-1);1(0,1,2,3,4,5,6,7,8,9,10,11,12,13,14,15,16,17,18,19,20,21,22,23,24,25,26,27,28,29,30)]
 nominal mediahuff, 4,0,medhuff
 nominal mediasean, 101, 0, mediasean,[-1(-1);1(0,1,2,3,4,5,6,7,8,9,10,11,12,13,14,15,16,17,18,19,20,21,22,23,24,25,26,27,28,29,30)]
 nominal mediasean, 4,1,medsean
 nominal mediaglenn, 101, 0, mediaglenn,[-1(-1);1(0,1,2,3,4,5,6,7,8,9,10,11,12,13,14,15,16,17,18,19,20,21,22,23,24,25,26,27,28,29,30)]
 nominal mediaglenn, 4,1,medglenn
 nominal Discwhite, 6,1,discwhite,[-1(-1);1(1,2);2(3);3(4,5)]
 nominal discblack, 6,1,discblack,[-1(-1);1(1,2);2(3);3(4,5)]
 nominal discmuslim, 6,1,discmuslim,[-1(-1);1(1,2);2(3);3(4,5)]
 nominal dischispanic, 6,1,dischispanic,[-1(-1);1(1,2);2(3);3(4,5)]
 nominal discmen, 6,1,discmen,[-1(-1);1(1,2);2(3);3(4,5)]
 nominal discwomen, 6,1,discwomen,[-1(-1);1(1,2);2(3);3(4,5)]
 nominal discdem, 6,1,discdem,[-1(-1);1(1,2);2(3);3(4,5)]

```

nominal      discrep, 6,1,discrep,[-1(-1);1(1,2);2(3);3(4,5)]
nominal      discaltright, 6,1,discaltright,[-1(-1);1(1,2);2(3);3(4,5)]
nominal      discimm, 6,1,discimm,[-1(-1);1(1,2);2(3);3(4,5)]
nominal      Problemsdiscwhite, 8,1,Problemsdiscwhite,[-1(-1);1(1,2);2(3,4,5);3(6,7)]
nominal      problemsdiscblack, 8,1,problemsdiscblack,[-1(-1);1(1,2);2(3,4,5);3(6,7)]
nominal      problemsdiscmen, 8,1,problemsdiscmen,[-1(-1);1(1,2);2(3,4,5);3(6,7)]
nominal      problemsdiscwomen, 8,1,problemsdiscwomen,[-1(-1);1(1,2);2(3,4,5);3(6,7)]
nominal      problemscorrupt, 8,1,problemscorrupt,[-1(-1);1(1,2);2(3,4,5);3(6,7)]
nominal      problemselitegap, 8,1,problemselitegap,[-1(-1);1(1,2);2(3,4,5);3(6,7)]
nominal      problemsrichgap, 8,1,problemsrichgap,[-1(-1);1(1,2);2(3,4,5);3(6,7)]
nominal      problemscrime, 8,1,problemscrime,[-1(-1);1(1,2);2(3,4,5);3(6,7)]
nominal      problemshealth, 8,1,problemshealth,[-1(-1);1(1,2);2(3,4,5);3(6,7)]
nominal      problemsclimate, 8,1,problemsclimate,[-1(-1);1(1,2);2(3,4,5);3(6,7)]
nominal      problemsimm, 8,1,problemsimm,[-1(-1);1(1,2);2(3,4,5);3(6,7)]
nominal      Problemsterror, 8,1,Problemsterror,[-1(-1);1(1,2);2(3,4,5);3(6,7)]
nominal      problemspc, 8,1,problemspc,[-1(-1);1(1,2);2(3,4,5);3(6,7)]
nominal      Wlm1, 8,1,wlm1,[-1(-1);1(1,2);2(3,4,5);3(6,7)]
nominal      wlm2, 8,1,wlm2,[-1(-1);1(1,2);2(3,4,5);3(6,7)]
nominal      wlm3, 8,1,wlm3,[-1(-1);1(1,2);2(3,4,5);3(6,7)]
nominal      wlm4, 8,1,wlm4,[-1(-1);1(1,2);2(3,4,5);3(6,7)]
nominal      wlm5, 8,1,wlm5,[-1(-1);1(1,2);2(3,4,5);3(6,7)]
nominal      Blmsupport, 8,1,blmsupport,[-1(-1);1(1,2);2(3,4,5);3(6,7)]
nominal      blmharm, 8,1,blmharm,[-1(-1);1(1,2);2(3,4,5);3(6,7)]
nominal      blmdivide, 8,1,blmdivide,[-1(-1);1(1,2);2(3,4,5);3(6,7)]
nominal      policerespect, 8,1,policerespect,[-1(-1);1(1,2);2(3,4,5);3(6,7)]
nominal      policedisc, 8,1,policedisc,[-1(-1);1(1,2);2(3,4,5);3(6,7)]
nominal      policeracist, 8,1,policeracist,[-1(-1);1(1,2);2(3,4,5);3(6,7)]
nominal      altrightident2, 3,0,altrightid2
no-frequency Y
ipf-maxdev 0.2
ipf-maxit 266
Alpha threshold 0.05
Data Lines Read 978
Input data file 3-7 directed 100 bins.txt
Generate hypergraph images Y
Generate Gephi files N
Hypergraph layout style Fruchterman-Reingold
Hypergraph image width 640
Hypergraph image height 480
Hypergraph font size 12
Hypergraph node size 24
Hide IV components in hypergraph Y

```

```

State Space Size 1.61262e+106
Sample Size 524

```

Warning: option 'no-frequency' is set and sample size (524) does not equal number of lines read (978); this may be due to lines being excluded due to missing values, or the selection of specific variable states for analysis, or the presence of a frequency column (which may be due to a missing variable declaration)

```

H(data) 9.03342
H(IV) 9.03342
H(DV) 0.251319
T(IV:DV) 0.251319

```

```

IVs in use (179) Racew Raceb Racec Racee Races Raceo Gender Sncloseb Snmoralb Snidbin Metai1 Metai2 Metai3 Metai4 Metai5 Metai6 Stoppush Mfqhar
Sdo2 Sdo3 Sdo4 Sdo5 Sdo6 Darktria Darktria Darktria Darktria Darktria Darktria Darktria Darktria Darktria Darktria
Motems2 Motems3 Motims1 Motims2 Motims3 Behonnam Behofnam Behonthr Behofthr Behonhar Behofhar Behonsta Behofsta Behdox Behmeme
Blatwht7 Blatwht8 Blatwht9 Ascamerb Asceurbi Ascarabb Ascswabi Ascniabi Ascusbi Ascmexbi Ascwhbti Aschkbki Ascturbi
Countrys Natsit Natimp Perssit Persimp Medcnn Medecon Mednyt Medfox Medwash Medbcc Medwsj Medblz Meddrud Medabc Medcbs Mednbc
Discmen Discwome Discdem Discrep Discaltr Discimm Problems Problems Problems Problems Problems Problems Problems Problems Prob
DV Altrightid

```

```

Model IV:AltrightidRacewRacee:AltrightidRacebRaceh:AltrightidRacesRaceo:AltrightidSnidbin:AltrightidSdo3:AltrightidRwa4:AltrightidMotims1:AltrightidBehdox:AltrightidBlatw
(Directed System)
Model Component: altrightident; racewhite; raceeastas
Model Component: altrightident; raceblack; racehispanic
Model Component: altrightident; racesouthas; raceother
Model Component: altrightident; snidBIN

```

```

Model      altrightident; sdo3
Component:
Model      altrightident; rwa4
Component:
Model      altrightident; Motivims1
Component:
Model      altrightident; behaviordox
Component:
Model      altrightident; blatantwhite9
Component:
Model      altrightident; ascusBIN
Component:
Model      altrightident; ascwhtBIN
Component:
Model      altrightident; trumpally
Component:
Model      altrightident; mediacbs
Component:
Model      altrightident; wlm3
Component:
Model      altrightident; wlm5
Component:
racewhite; raceblack; racehispanic; raceeastas; racesouthas; raceother; gender; sncloseBIN; smoralBIN; snidBIN; metainversion1; metainve:
mfqgharm1; mfqfair1; mfqloyall; mfqauthority1; mfqpurity1; mfqfiller; mfqgharm2; mfqfair2; mfqloyal2; mfqauthority2; mfqpurity2; Sdo1; sdo2
darktriadn1; darktriadn2; darktriadn3; darktriadn4; Darktriadp1; darktriadp2; darktriadp3; darktriadp4; Rwal; rwa2; rwa3; rwa4; rwa5; rwa
motivems2; motivems3; Motivims1; motivims2; motivims3; Behavioronlinename; behaviorofflinename; behavioronlinethreat; Behaviorofflinethre:
IV
Component: behaviorofflinestatement; behaviordox; Behaviormeme; Blatantblack1; blatantblack2; blatantblack3; blatantblack4; blatantblack5; blatantbl:
blatantwhite3; blatantwhite4; blatantwhite5; blatantwhite6; blatantwhite7; blatantwhite8; blatantwhite9; ascentamerBIN; asceurBIN; ascaral
ascturBIN; ascdonBIN; aschilBIN; ascdemBIN; ascrepBIN; ascchristBIN; ascjewBIN; ascfemBIN; ascmenBIN; ascwomBIN; asreprefBIN; asdemrefBIN
Perssit; Persimp; mediacon; mediaecon; medianyt; mediafox; mediawash; mediabcc; mediawsj; mediablz; mediadrud; mediaabc; mediacbs; medianl
mediasean; mediaglenn; Discwhite; discblack; discmuslim; dischispanic; discmen; discwomen; discdem; discrep; discaltright; discimm; Probl
problemselitegap; problemsrichgap; problemscrime; problemshealth; problemsclimate; problemsimm; Problemsterror; problemspc; Wlm1; wlm2; w
Degrees of
Freedom    8.06308e+105
(DF):
Loops:     YES
Entropy(H): 9.0564
Information
captured   90.8557
(%):
Transmission (T): 0.0229813
    
```

REFERENCE = TOP

	Value	Prob. (Alpha)
Log-Likelihood (LR)	16.694	1
Pearson X2	0.429081	1
Delta DF (dDF)	8.06308e+105	

REFERENCE = BOTTOM

	Value	Prob. (Alpha)
Log-Likelihood (LR)	165.869	0
Pearson X2	0.429081	0
Delta DF (dDF)	45	

Miles Schneider
Data Mining with Information Theory
Dr. Joe Fusion
Submitted March 15th 2018

Appendix C: Survey Codebook

We're interested in learning more about people who choose to identify with the alt-right movement. We feel that there are a lot of misunderstandings about the alt-right, and that the views of people who identify with the alt-right are not well-represented. We want to address this issue. This is a chance to ensure that your views are represented accurately in the mainstream media or other outlets.

In some of the following questions, you will have the chance to write your response. In some of the following questions, we're looking for your response to survey items.

Please remember that all your responses are confidential. We'll never reveal who you are. In order for us to understand your views accurately, it's important that you answer these questions honestly.

arrival How did you find out about this survey?

- mTurk (0)
- Other (please specify) (1) _____

alt_right_ident Do you identify with the alt-right movement?

- Yes (1)
- No (0)

race What is your race/ethnicity?

- White (1)
- Black (2)
- Hispanic (3)
- East Asian (4)
- South Asian (5)
- Other (6)

gender What is your gender?

- Female (0)
- Male (1)

country Which country were you born in?

ideo_free In one or two sentences, how would you describe the alt-right ideology?

ident_free Why do you choose to identify with the alt-right movement?

mis_free What are some common misconceptions about people who identify with the alt-right movement?

racist_free What are your thoughts when people claim the alt-right is racist?

sn_inst Please take a moment to write the first names of your five closest friends. You can name fewer friends if you like.

If you don't want to use the real names of your friends, you can write nicknames instead, but make sure that you recognize what you write. We'll never reveal who these people are to others, but we will ask you some questions about these people once you are done.

sn_1 First friend

sn_2 Second friend

sn_3 Third friend

sn_4 Fourth friend

sn_5 Fifth friend

implement a social system where all groups get an equal share of power. (3)

Black Americans are highly motivated to "turn the tables" on the groups at the top of the social system and enjoy the advantages they've been enjoying.

(4)

If Black Americans were on top, they would want the groups currently dominating to suffer.

(5)

If Black Americans got to the top of the social hierarchy, they would want to stay on top and keep other



groups down. (6)							
---------------------	--	--	--	--	--	--	--

stop_push Assume that through collective struggle, Black Americans had attained equal social, economic, and political power as Whites. If Black Americans got to that point of exact equality, do you think that Black Americans as a group would be content with stopping right there, or do you think they would want to continue to push for more power?

- Stop right there 1 (1)
- 2 (2)
- 3 (3)
- 4 (4)
- 5 (5)
- 6 (6)
- Push for more power 7 (7)

groups
an equal
chance to
succeed.

(5)

We
should do
what we
can to
equalize
condition
s for
different
groups.

(6)

○

○

○

○

○

○

○

established religions are no doubt every bit as good and virtuous as those who attend church regularly. (4)

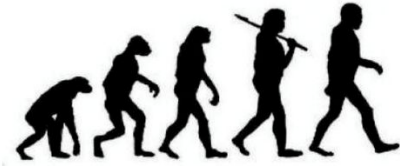
A woman's place should be wherever she wants to be. The days when women are submissive to their husbands and social conventions belong strictly in the past. (5)

Our customs and national heritage are the things that have made us great, and certain people should be made to show greater respect for them. (6)

to my self-concept. (imp_1)
Minimizing my contact with Black people is personally important to me.
(imp_2)
My beliefs motivate me to express negative views about Black people.
(imp_3)
Because of today's PC (politically correct) standards I try to appear non-prejudiced toward Black people.
(ems_1)
I try to hide any negative thoughts about Black people in order to avoid negative reactions from others.
(ems_2)

ascent_inst Some people think that people can vary in how human-like they seem. According to this view, some people seem highly evolved whereas others seem no different than lower animals. Using the sliders below, indicate how evolved you consider each of the following individuals or groups to be.

Ascent



- _____ Americans
- _____ Europeans
- _____ Arabs
- _____ Swedes
- _____ Nigerians
- _____ Russians
- _____ Muslims
- _____ Mexicans
- _____ White people
- _____ Black people
- _____ Turks
- _____ Donald Trump
- _____ Hillary Clinton
- _____ Democrats
- _____ Republicans
- _____ Christians
- _____ Jews
- _____ Feminists
- _____ Men
- _____ Women
- _____ Republicans who refused to vote for Trump
- _____ Democrats who refused to vote for Clinton
- _____ Journalists from mainstream media outlets
- _____ Government employees

vote Which presidential candidate did you vote for in the 2016 election?

- Donald Trump (1)
- Hillary Clinton (2)
- Jill Stein (3)
- Gary Johnson (4)
- Another candidate (5)
- I didn't vote (6)

trump_satis Overall, how satisfied or dissatisfied are you with President Trump's job performance?

- Very dissatisfied 1 (1)
- 2 (2)
- 3 (3)
- 4 (4)
- 5 (5)
- 6 (6)
- Very satisfied 7 (7)

trump_ally To what extent do you feel that President Trump is an ally of the alt-right movement?

- Not at all 1 (1)
- 2 (2)
- 3 (3)
- 4 (4)
- 5 (5)
- 6 (6)
- Very much 7 (7)

country_satis Overall, how satisfied or dissatisfied are you with the way things are going in the United States?

- Very dissatisfied 1 (1)
- 2 (2)
- 3 (3)
- 4 (4)
- 5 (5)
- 6 (6)
- Very satisfied 7 (7)

nat_sit Think about the national economic situation. How would you describe the current economic situation in the US — is it very bad, somewhat bad, somewhat good, or very good?

- Very bad (1)
- Somewhat bad (2)
- Somewhat good (3)
- Very good (4)

nat_imp Over the next 12 months, do you expect the national economic situation to worsen a lot, worsen a little, remain the same, improve a little, or improve a lot?

- Worsen a lot (1)
- Worsen a little (2)
- Remain the same (3)
- Improve a little (4)
- Improve a lot (5)

pers_sit Think about your personal economic situation. How would you describe your own current economic situation — is it very bad, somewhat bad, somewhat good, or very good?

- Very bad (1)
- Somewhat bad (2)
- Somewhat good (3)
- Very good (4)

pers_imp Over the next 12 months, do you expect your personal economic situation to worsen a lot, worsen a little, remain the same, improve a little, or improve a lot?

- Worsen a lot (1)
- Worsen a little (2)
- Remain the same (3)
- Improve a little (4)
- Improve a lot (5)

media_inst We'd like you to think about your perceptions of outlets for the news. You may view some outlets as trustworthy and some as not trustworthy, or even fake.

Please rate the news outlets below as to how trustworthy or untrustworthy you perceive them to be.

- _____ CNN
- _____ The Economist
- _____ The New York Times
- _____ Fox News
- _____ Washington Post
- _____ BBC
- _____ The Wall Street Journal
- _____ The Blaze
- _____ Drudge Report
- _____ ABC News
- _____ CBS News
- _____ NBC News
- _____ InfoWars
- _____ The Daily Caller
- _____ Breitbart
- _____ The Rush Limbaugh Show
- _____ BuzzFeed
- _____ MSNBC
- _____ The Rachel Maddow Show
- _____ The Huffington Post
- _____ The Sean Hannity Show
- _____ The Glenn Beck Show

disc We're interested in your views about discrimination in the United States -- that is, the degree to which people in the United States are treated differently by others because they belong to a particular group.

Some groups may receive advantages due to discrimination, some may receive disadvantages. Some groups may receive neither advantages nor disadvantages.

Please read over the following groups and rate the extent to which they currently receive advantages and disadvantages due to discrimination.

	Strong disadvantage (1)	Moderate disadvantage (2)	No advantage or disadvantage (3)	Moderate advantage (4)	Strong advantage (5)
White people (white)	<input type="radio"/>	<input type="radio"/>	<input type="radio"/>	<input type="radio"/>	<input type="radio"/>
Black people (black)	<input type="radio"/>	<input type="radio"/>	<input type="radio"/>	<input type="radio"/>	<input type="radio"/>
Muslim people (muslim)	<input type="radio"/>	<input type="radio"/>	<input type="radio"/>	<input type="radio"/>	<input type="radio"/>
Hispanics (hispanic)	<input type="radio"/>	<input type="radio"/>	<input type="radio"/>	<input type="radio"/>	<input type="radio"/>
Men (men)	<input type="radio"/>	<input type="radio"/>	<input type="radio"/>	<input type="radio"/>	<input type="radio"/>
Women (women)	<input type="radio"/>	<input type="radio"/>	<input type="radio"/>	<input type="radio"/>	<input type="radio"/>
Democrats (dem)	<input type="radio"/>	<input type="radio"/>	<input type="radio"/>	<input type="radio"/>	<input type="radio"/>
Republicans (rep)	<input type="radio"/>	<input type="radio"/>	<input type="radio"/>	<input type="radio"/>	<input type="radio"/>
Members of the alt-right (altright)	<input type="radio"/>	<input type="radio"/>	<input type="radio"/>	<input type="radio"/>	<input type="radio"/>
Immigrants (imm)	<input type="radio"/>	<input type="radio"/>	<input type="radio"/>	<input type="radio"/>	<input type="radio"/>

advantage on the basis of their race, at the expense of Whites. (4) Whites need to start looking out more for one another. (5)	<input type="radio"/>	<input type="radio"/>	<input type="radio"/>	<input type="radio"/>	<input type="radio"/>	<input type="radio"/>	<input type="radio"/>
---	-----------------------	-----------------------	-----------------------	-----------------------	-----------------------	-----------------------	-----------------------

blm_support I support the Black Lives Matter movement.

- Strongly agree (7)
- Agree (6)
- Somewhat agree (5)
- Neither agree nor disagree (4)
- Somewhat disagree (3)
- Disagree (2)
- Strongly disagree (1)

blm_harm I think that the Black Lives Matter movement has been very harmful to our country.

- Strongly agree (7)
- Agree (6)
- Somewhat agree (5)
- Neither agree nor disagree (4)
- Somewhat disagree (3)
- Disagree (2)
- Strongly disagree (1)

blm_divide I think that the Black Lives Matter movement is racially divisive.

- Strongly agree (7)
- Agree (6)
- Somewhat agree (5)
- Neither agree nor disagree (4)
- Somewhat disagree (3)
- Disagree (2)
- Strongly disagree (1)

police_respect Police officers don't get the respect they deserve in this country.

- Strongly agree (7)
- Agree (6)
- Somewhat agree (5)
- Neither agree nor disagree (4)
- Somewhat disagree (3)
- Disagree (2)
- Strongly disagree (1)

police_disc I think that Black and White people are treated very differently by the police.

- Strongly agree (7)
- Agree (6)
- Somewhat agree (5)
- Neither agree nor disagree (4)
- Somewhat disagree (3)
- Disagree (2)
- Strongly disagree (1)

police_racist I think that racism is deeply woven into law enforcement.

- Strongly agree (1)
- Agree (2)
- Somewhat agree (3)
- Neither agree nor disagree (4)
- Somewhat disagree (5)
- Disagree (6)
- Strongly disagree (7)

alt_right_ident_2 We have already asked you this question, but it's really important that we know the honest answer. Your response will not affect your compensation in any way.

Do you identify with the alt-right movement?

- Yes (1)
- No (0)